

# INTERNATIONAL PORT OF MEMPHIS

## STRATEGIC MASTER PLAN ACTION ITEMS

The overall economic impact of the Port of Memphis and the business entities operating within its jurisdiction is \$9.27 Billion annually and does not include the one-time impact of capital investments made by port-related entities each year. Because of the significance of that impact and the Port's importance to the economic vitality of the region, the Economic Development Growth Engine and Port of Memphis commissioned a Port Master Strategic Plan in 2018 to help maintain and grow that level of economic impact.

In addition to the recommendation of industries to target as potential economic development partners, the study also provides numerous recommendations geared toward sustaining existing economic activities and enhancing future development opportunities. In an effort to focus on the highest and best use of existing and potential resources, the top development and maintenance recommendations have been established.

## Priority Recommendations

### Development Priorities

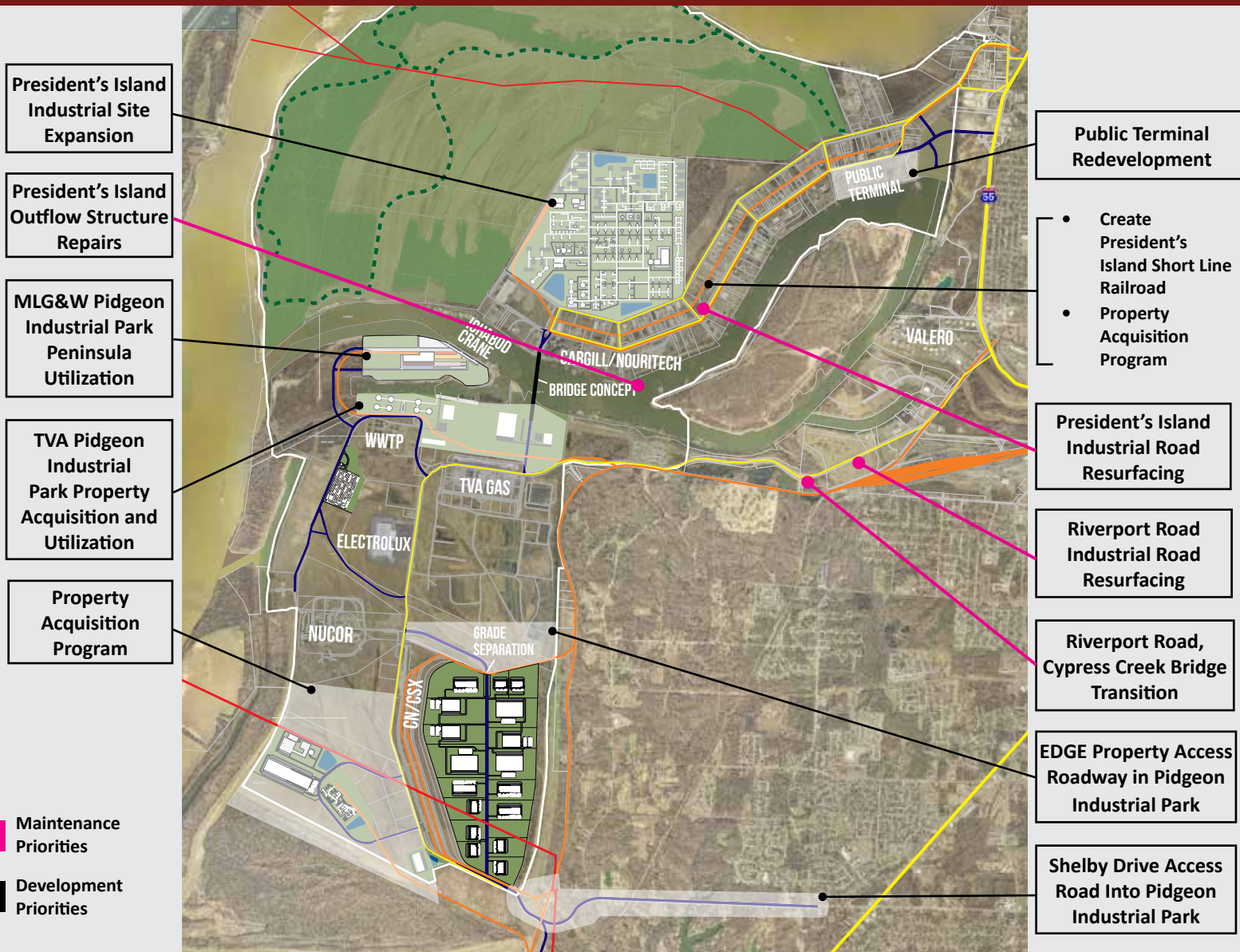
1. Public Terminal Redevelopment
2. Create President's Island Short Line Railroad
3. TVA Pidgeon Industrial Park Property Acquisition and Utilization
4. MLG&W Pidgeon Industrial Park Peninsula Utilization
5. Property Acquisition Program
6. EDGE Property Access Roadway in Pidgeon Industrial Park
7. Shelby Drive Access Road into Pidgeon Industrial Park
8. President's Island Industrial Site Expansion

### Maintenance Priorities

1. President's Island Industrial Road Resurfacing
2. President's Island Outflow Structure Repairs
3. Riverport Road Industrial Road Resurfacing
4. Riverport Road, Cypress Creek Bridge Transition



# Priority Action Items



## Remaining Recommendations

- **Roadway/Surface Repairs**
  - Harbor/Channel/ Cross Street Repaving
  - Riverport Road Bridge Transition Repairs
  - Harbor Avenue Shoulder Addition
  - Riverport/Paul Lowry Resurfacing
  - President's Island Public Terminal Sites Repaving
- **Soil Mitigation Program**
- **President's Island Rail Upgrade**
- **Widening Mouth of McKellar Lake**
- **Reconfigure Nucor/Pidgeon Harbor Chute**
- **South Parkway Extension to Channel Avenue Security Enhancements**
- **McKellar (Buoy Street) Bridge**
- **Aesthetics**
  - Gateway
  - Wayfinding
  - Streetscape
- **President's Island Bike/Pedestrian Nature Trail**
- **Telecommunications Upgrade**